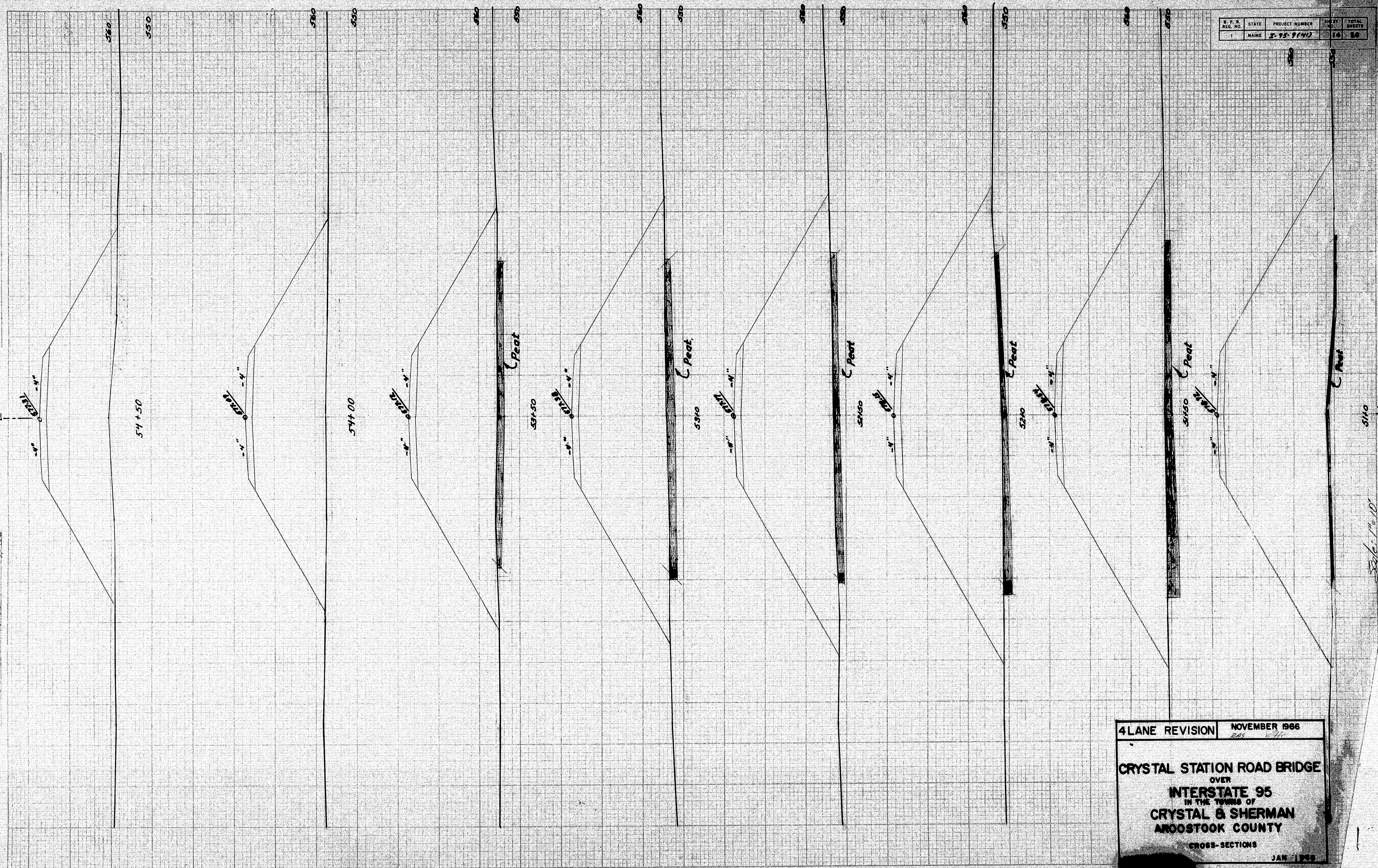
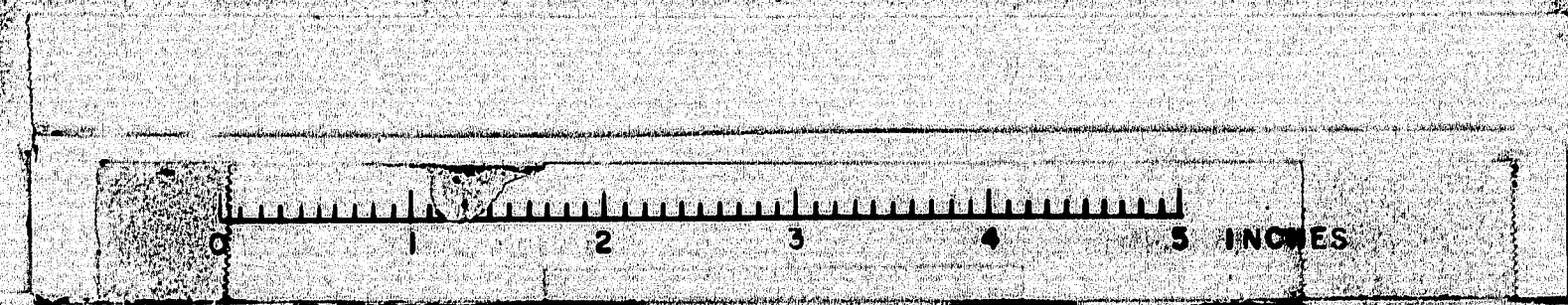


DATE	
FINAL SURVEY	
APPROVED	

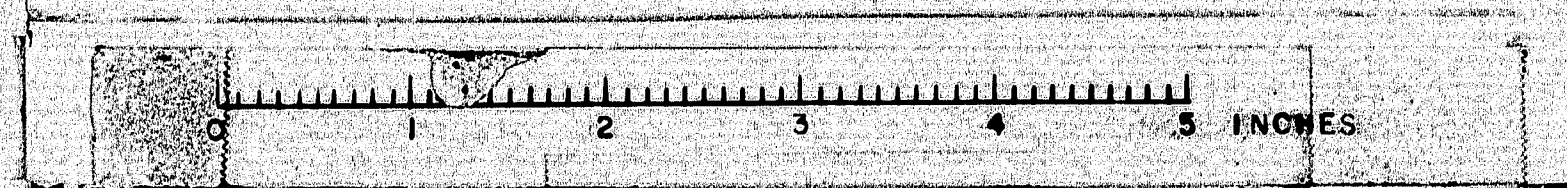
ORIGINAL SURVEY	DATE	BY
11-10-77	10-5-85	PLS



4 LANE REVISION NOVEMBER 1986
 CRYSTAL STATION ROAD BRIDGE
 OVER
 INTERSTATE 95
 IN THE TOWNS OF
 CRYSTAL & SHERMAN
 ARROOSTOOK COUNTY
 CROSS-SECTIONS
 JAN 1988



ORIGINAL SIXER NEED	SEARCHED INDEXED SERIALIZED FILED	APR 10 1968 FBI - NEW YORK	106-55 106-65 106-5	106-55 106-65 106-5
---------------------------	--------------------------------------	-------------------------------	---------------------------	---------------------------



4 LANE REVISION

NOVEMBER 1966
RAS : *SA*

CRYSTAL STATION ROAD BRIDGE
OVER
INTERSTATE 95
IN THE TOWNS OF
CRYSTAL & SHERMAN
AROSTOOK COUNTY
CROSS-SECTIONS

JAN 1968

Sta 55+00 to Sta. 59+50

DATE	11/1/66
BY	W. J. B.
CHECKED	W. J. B.
APPROVED	W. J. B.

ORIGINAL	11/1/66
SURFACE	11/1/66
SECTION	11/1/66
SCALE	1" = 10'

STATE	PROJECT NUMBER	SHEET NO.	TOTAL SHEETS
MAINE	2-75-9(41)	18	20

590 580 590 580 590 580 590 580 590 580 590 580 590 580

63+00

End of Transition

62+50

62+00

End (Full Section Construction)

61+50

61+00

60+50

60+00

Ledge outcrops on right from station 60+97 to station 61+22.

See 60+55 to 10' drive

Install 15"x10" Culvert Pipe under drive

Scale 1" = 10'

000000 to 510 60+00

4 LANE REVISION

NOVEMBER 1966

STATE HIGHWAY COMMISSION
BRIDGE DIVISION

CRYSTAL STATION ROAD BRIDGE

OVER

INTERSTATE 95

IN THE TOWNS OF

CRYSTAL & SHERMAN

AROOSTOOK COUNTY

CROSS-SECTIONS

AUGUSTA MAINE

JAN 1966

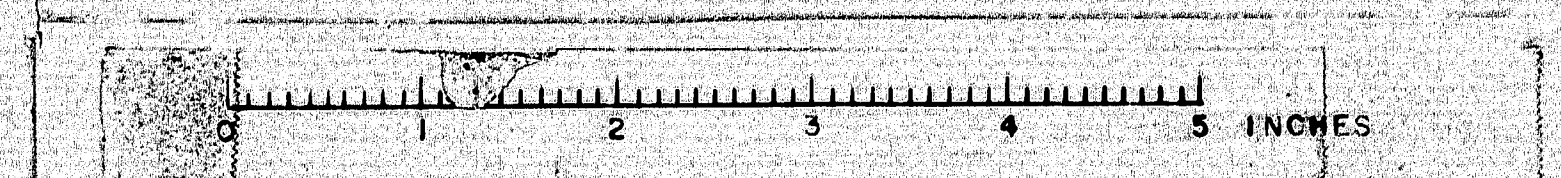
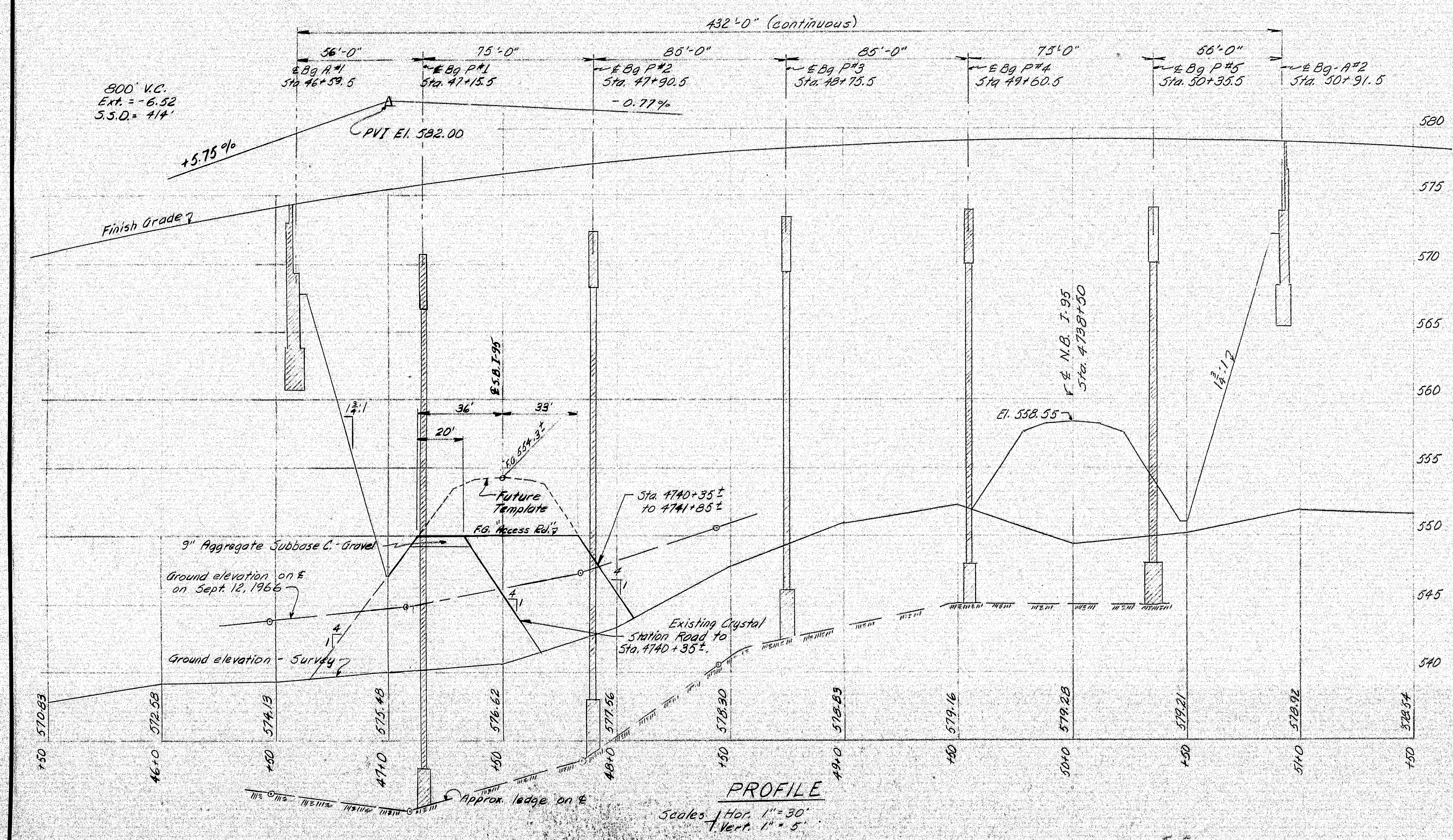
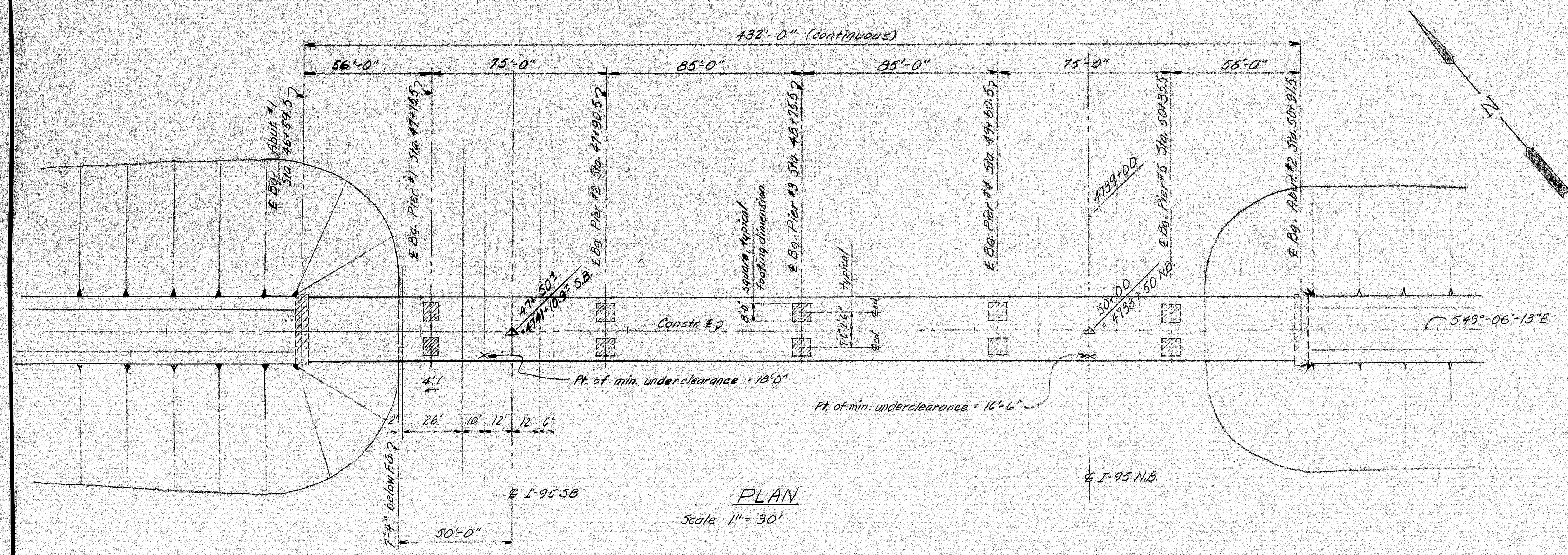


PLATE 3-CROSS SECTION



SPECIFICATIONS

DESIGN - A.A.S.H.O. Standard Specifications for Highway Bridges 1961 with Interim Specifications for 1961, 1962, 1963, and 1964.
CONTRACT - State of Maine, State Highway Commission Standard Specifications, Highways and Bridges, Revision of June 1963.

LIVE LOADING

H20-44

ALLOWABLE STRESSES

Concrete ~ $f_c = 1,800$ p.s.i. $n = 10$
 Reinforcing Steel, Intermediate Grade ~ $f_s = 20,000$ p.s.i.
 Structural Steel ~ A36 = 20,000 p.s.i.

CONCRETE CLASSIFICATION

Slope Protection - Class Y All Other - Class A

STRUCTURAL STEEL CLASSIFICATION

A.S.T.M.-A36, except as indicated on the Standard Sheets.

TEST PIT ELEVATIONS			
STATION	OFFSET	GRD. ELEV.	LEGS. ELEV.
47+08	E	544.9	529.9
47+84	E	541.3	533.6
48+44	E	550.6	540.6
48+48	15' Lt.	543.8	530.8
"	E	"	531.1
"	15' Rt.	"	532.8

4 LANE REVISION NOVEMBER 1966

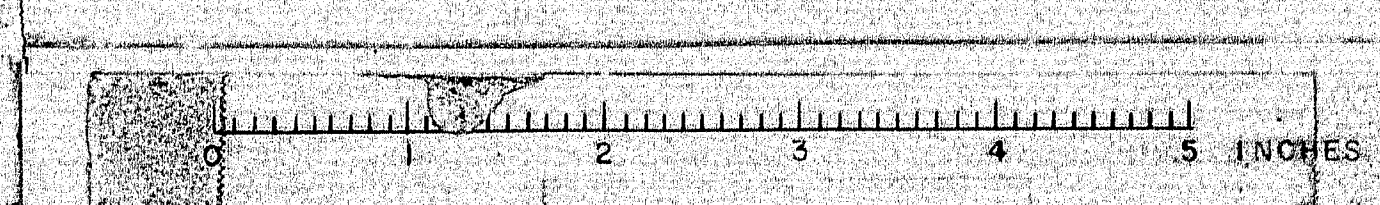
DESIGN - EAS
TRACE - AR

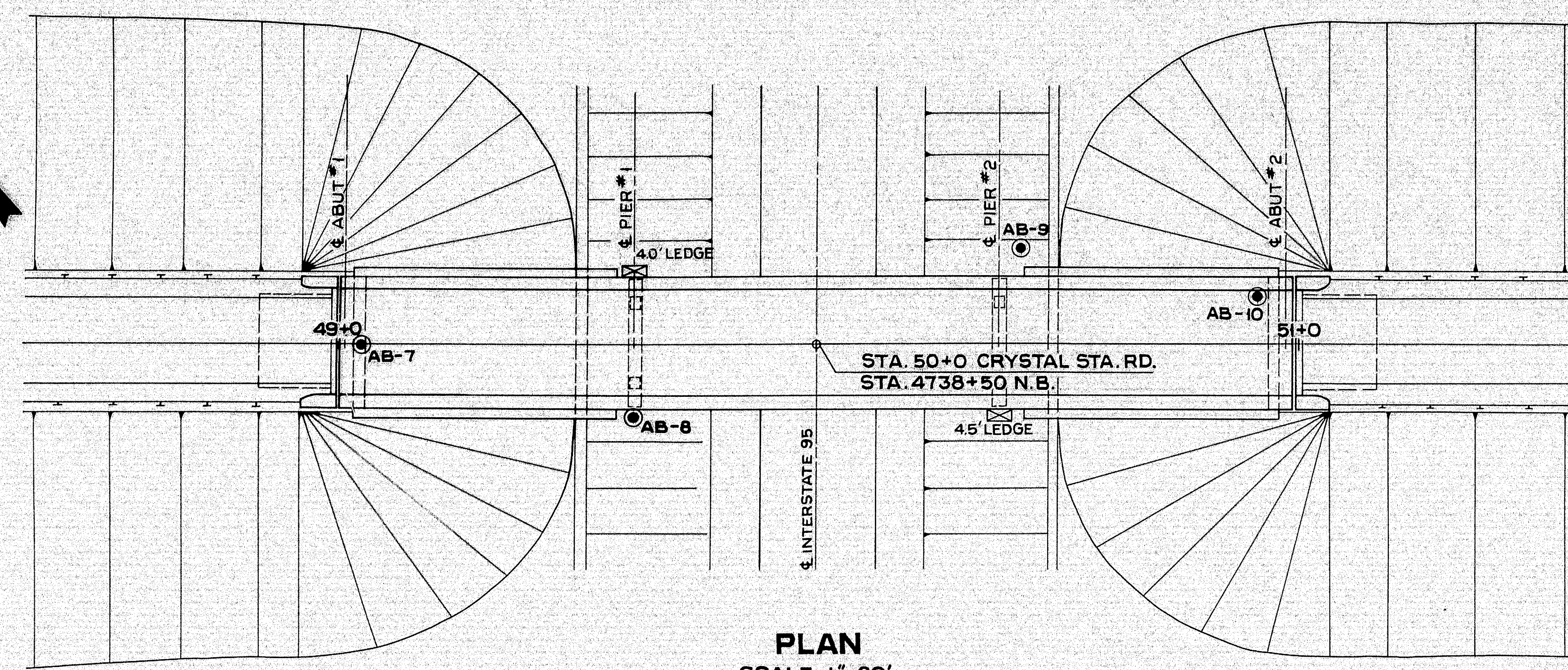
BRIDGE NO. 245
SURVEY PLOT -

STATE HIGHWAY COMMISSION
BRIDGE DIVISION
CRYSTAL STATION ROAD BRIDGE
OVER
INTERSTATE 95
IN THE TOWNS OF
CRYSTAL & SHERMAN
AROOSTOOK COUNTY
GENERAL PLAN

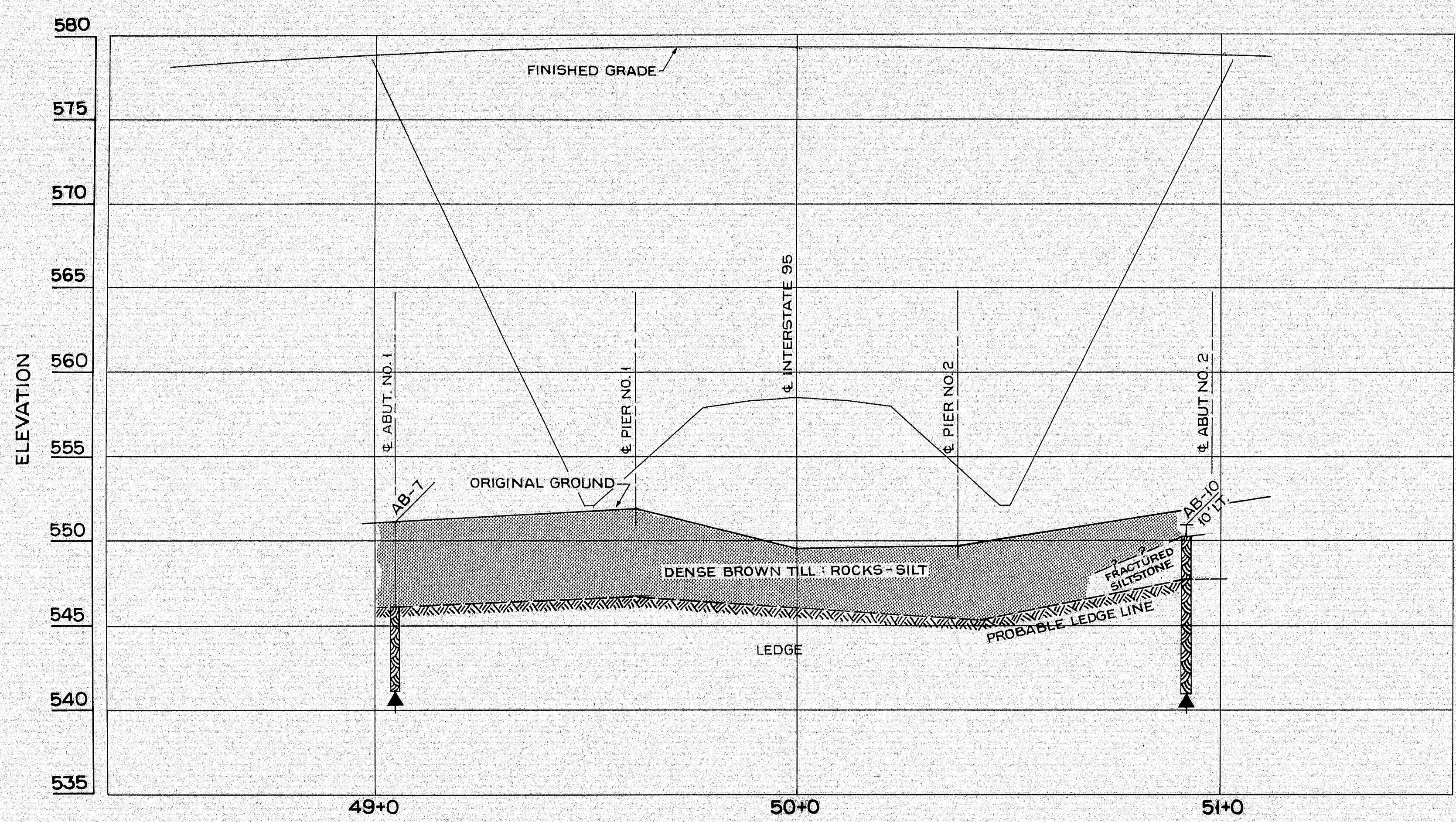
SHEET 17A OF 26 AUGUSTA, MAINE AUG. 1966

101-17 4. 2. 4. 2. 4.



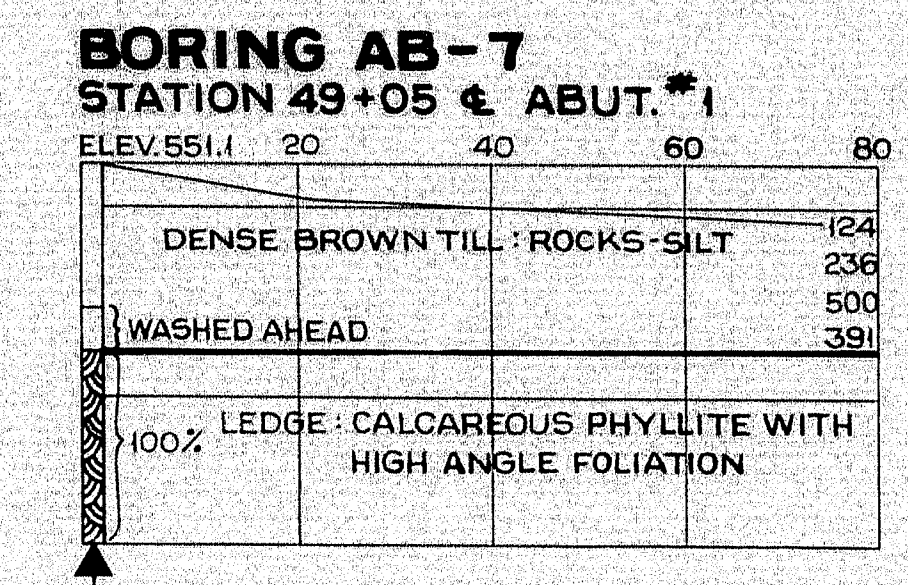


PLAN
SCALE: 1"=20'

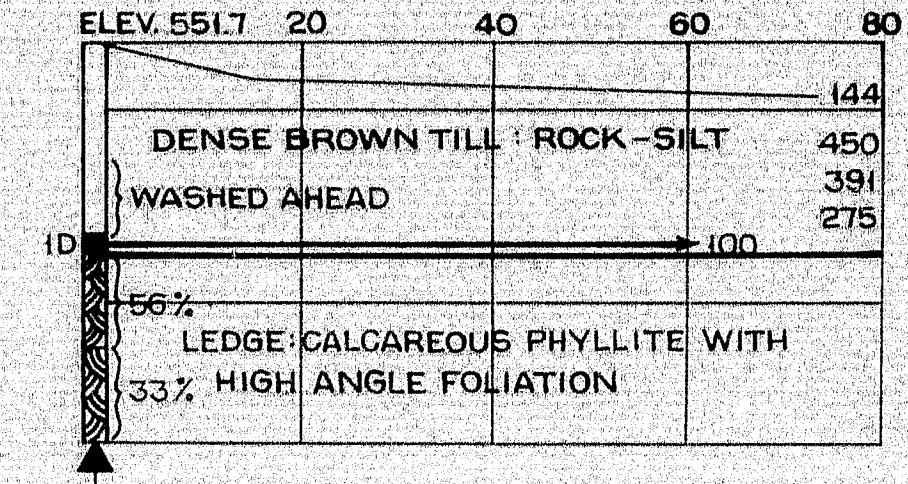


PROFILE
SCALE: 1"=5' VERT.; 1"=20' HORIZ.

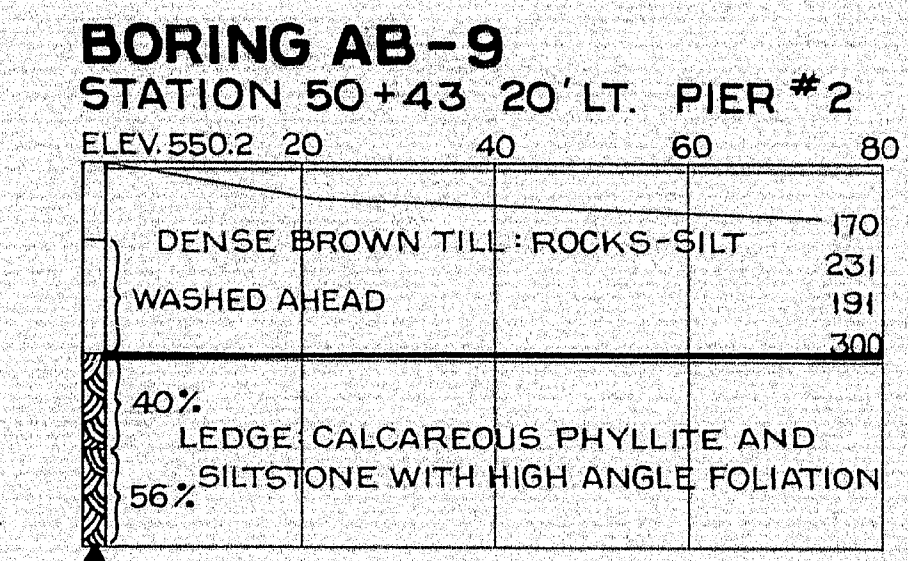
555
550
545
540



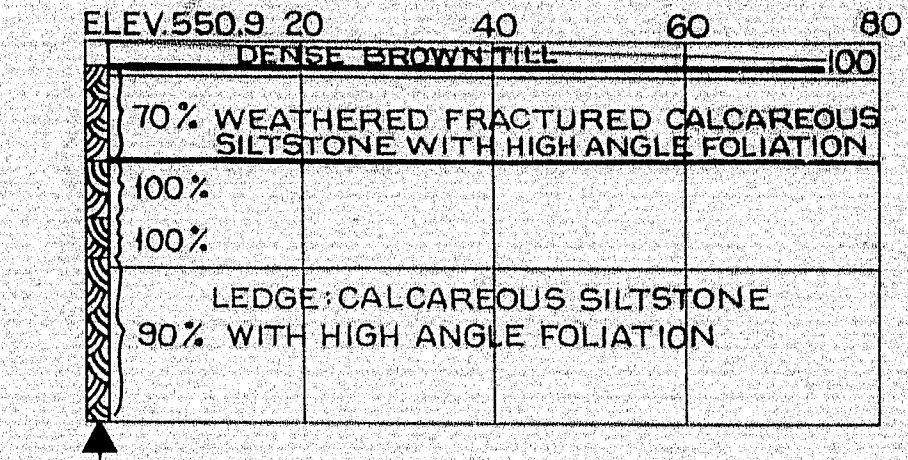
BORING AB-8
STATION 49+62 15' RT. PIER #1



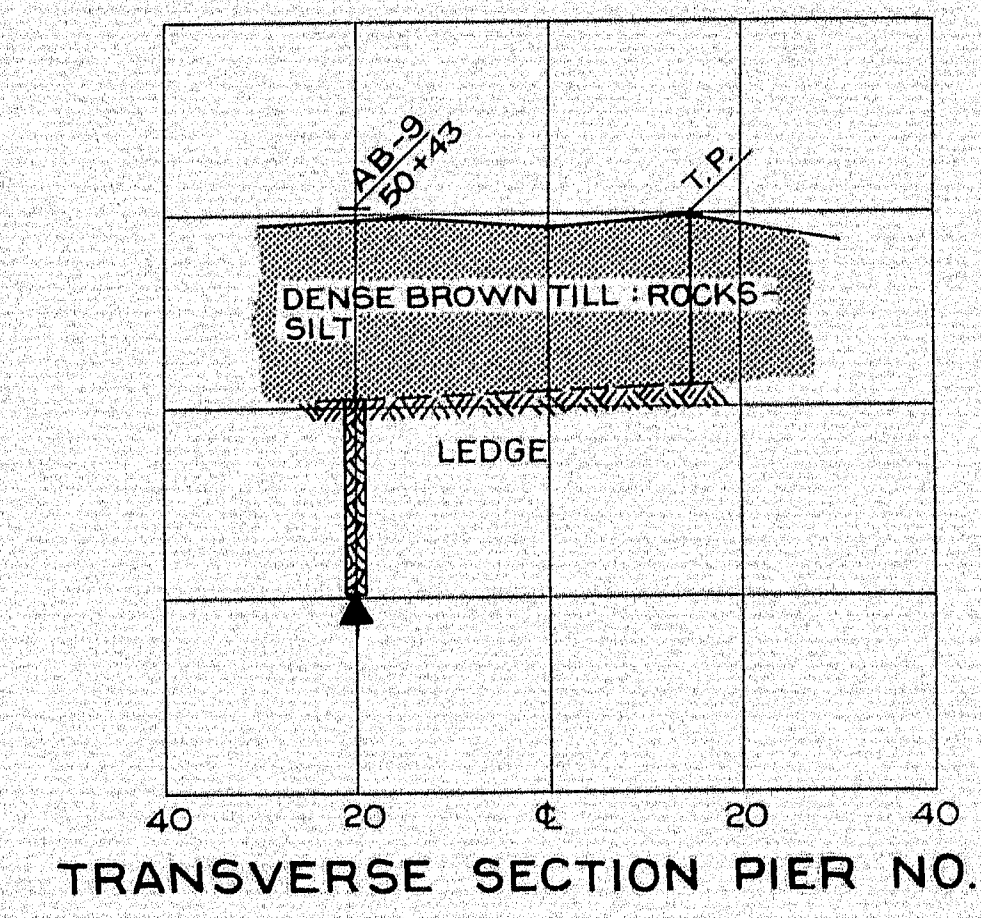
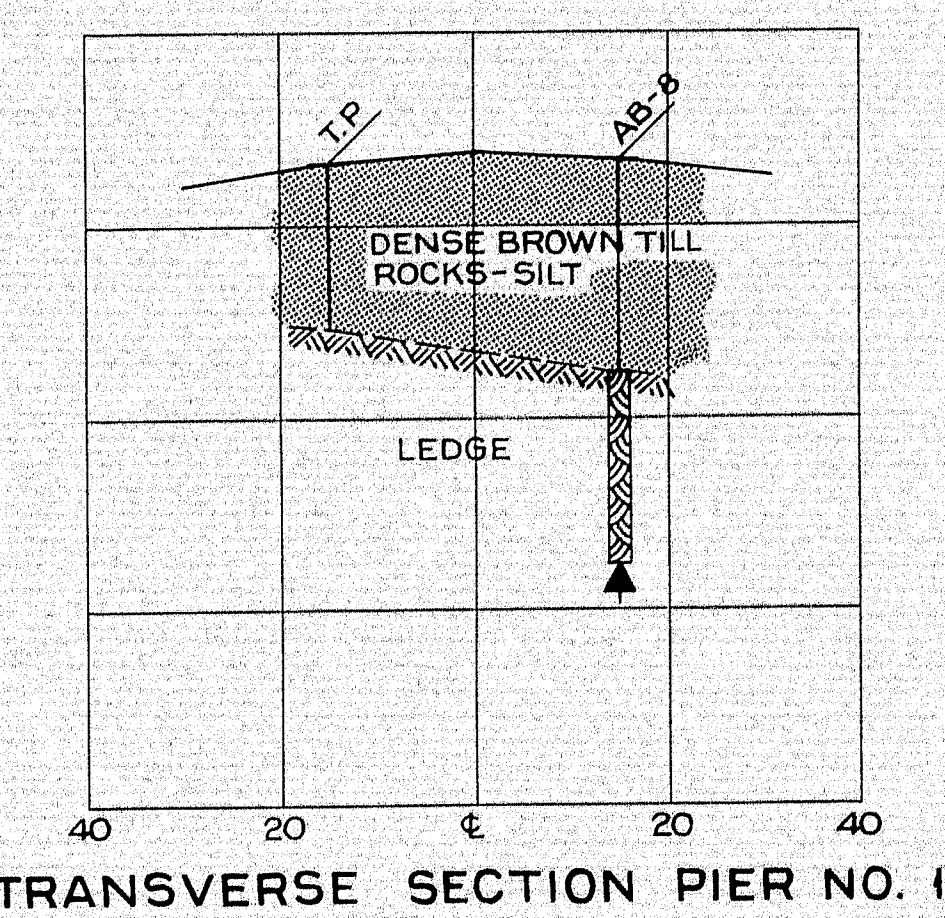
555
550
545
540



BORING AB-10
STATION 50+92 10' LT. ABUT. #2



555
550
545
540
535



BORING NOTES

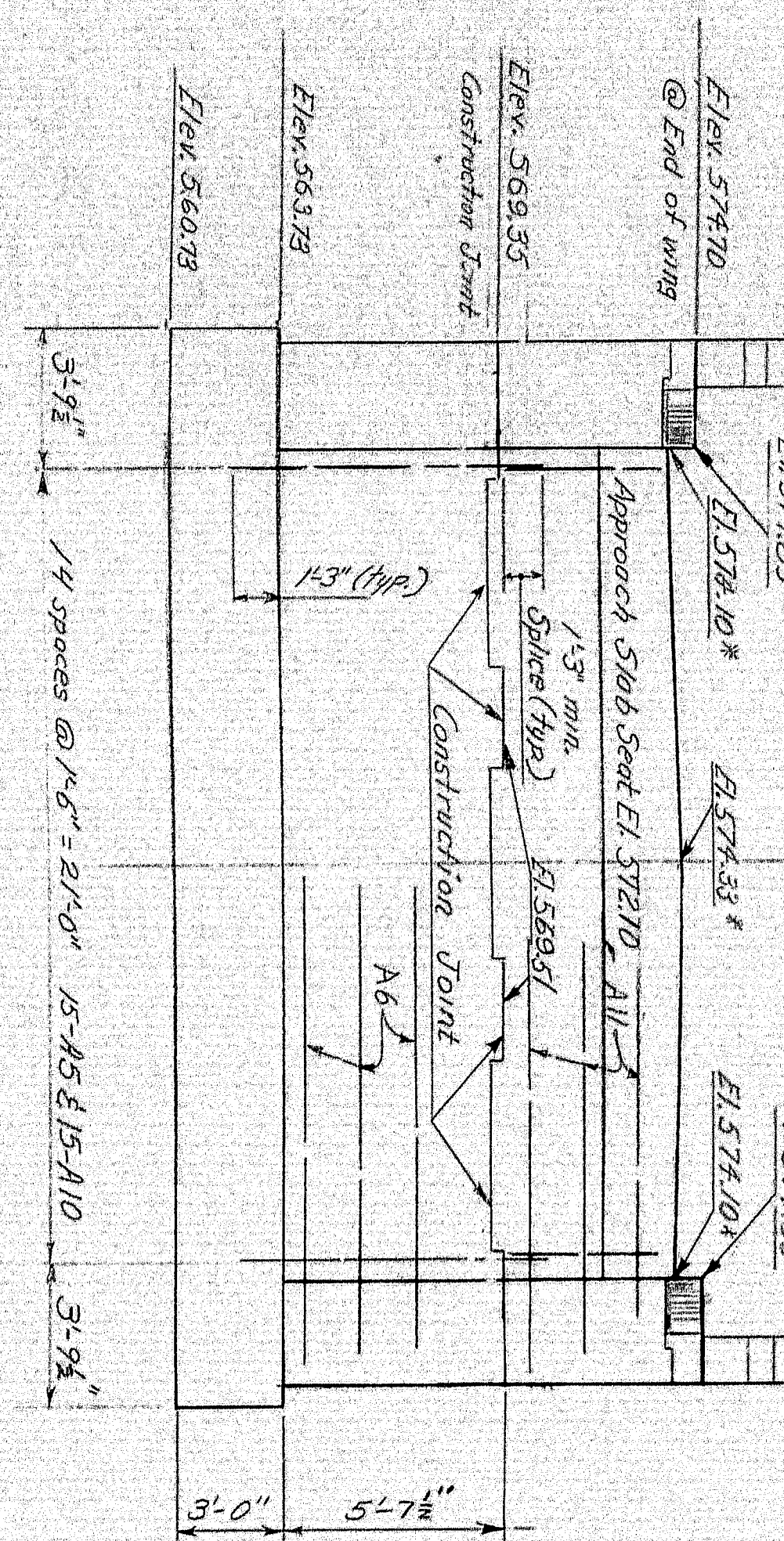
- ALL SAMPLES AND VANS ARE MADE AHEAD OF CASING
- NUMBER OF BLOWS REQUIRED TO DRIVE EXTRA HEAVY CASING ONE FOOT WITH 400 FT. LBS. OF ENERGY PER BLOW
- LOCATION OF SAMPLE OR SAMPLE ATTEMPT
- NUMBER AND TYPE OF DRY SAMPLE
- S & H SAMPLER #1290'S
- NUMBER OF BLOWS REQUIRED TO DRIVE SPOON OR TUBING ONE FOOT WITH 350 FT. LBS. OF ENERGY PER BLOW
- BOTTOM OF BORING (MAY NOT BE BOTTOM OF SOIL STRATA)
- LOCATION CORED BY DIAMOND BIT AND PER CENT RECOVERY OF ROCK

4 LANE REVISION NOVEMBER 1966

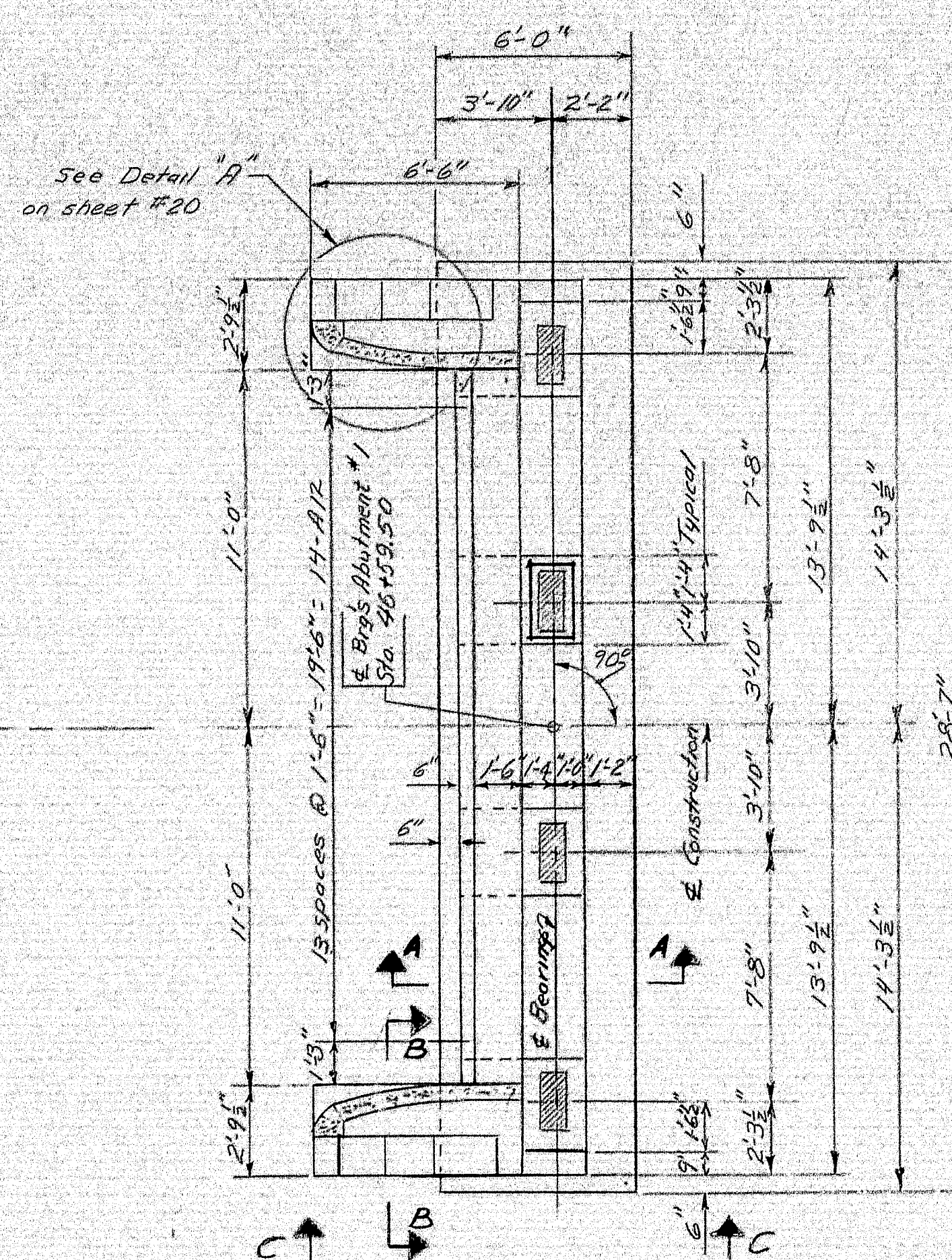
DESIGN- TRACE- CHECK-	BRIDGE NO. SURVEY- PLOT-
STATE HIGHWAY COMMISSION BRIDGE DIVISION	
CRYSTAL STATION ROAD BRIDGE	
OVER	
INTERSTATE 95	
IN THE TOWNS OF	
CRYSTAL & SHERMAN	
ARROOSTOOK COUNTY	
FOUNDATION SURVEY	
SHEET 13 OF 26 AUGUSTA, MAINE JAN 1966	

101-18

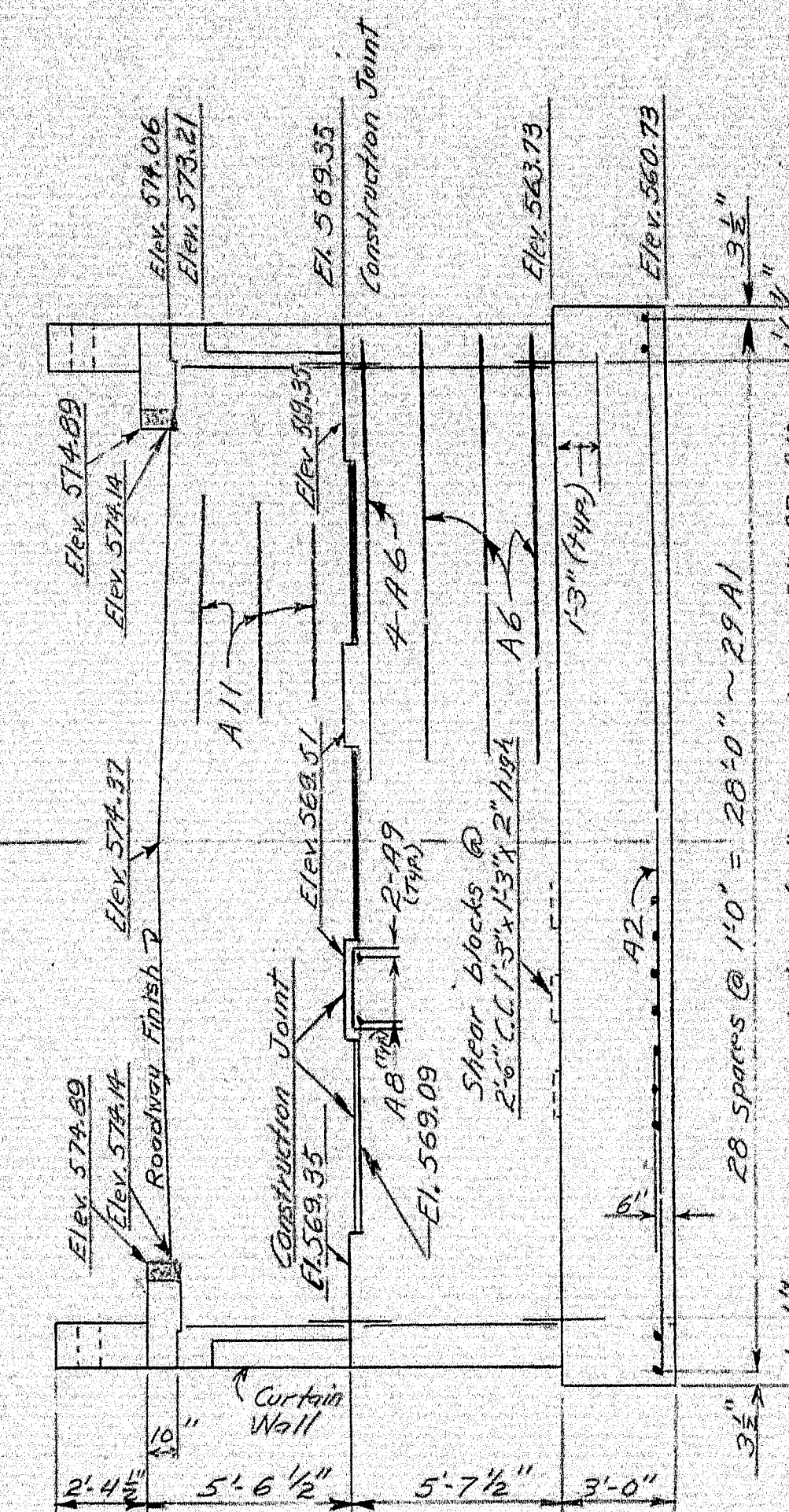
REAR ELEVATION



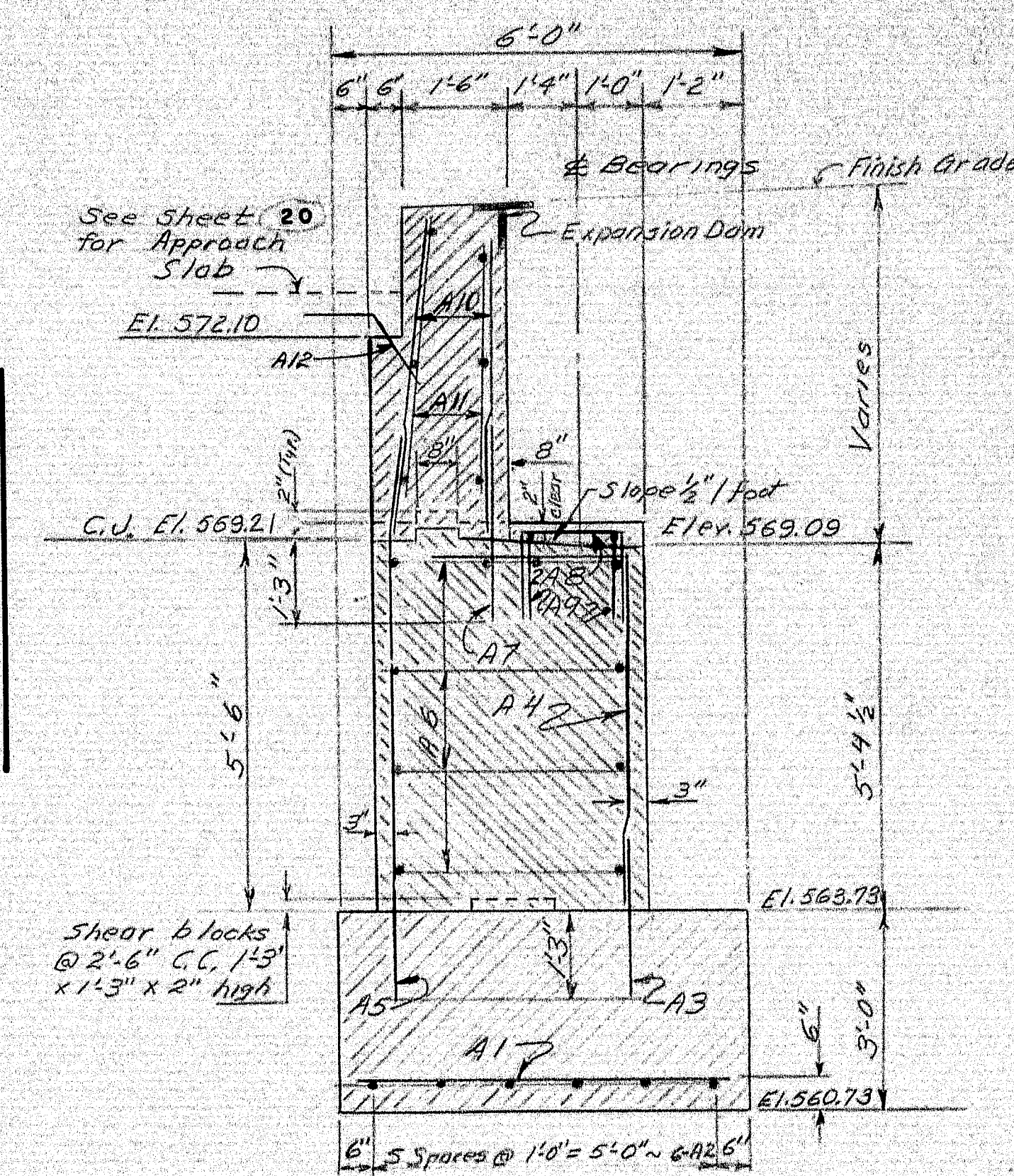
* Elevations at rear of backwall



PLAN



FRONT ELEVATION



SECTION A-A

GENERAL ABUTMENT NOTES

1. Paint top and front face of backwall, inside face of curtain walls, all of bridge seats, and front of breastwall down to 0'-6" below top of slope paving with Epoxy Resin Surface Sealant.
2. Reinforcing Steel to have 3" cover except as noted.
3. Backwalls & wingwalls above constr. joint to be built after Structural Steel has been erected, and bottom of slab elevations are established.
4. Maximum Design Soil Pressure = 2.5 tons / s.f.

Code
N.F. = Near Face
F.F. = Far
E.F. = End

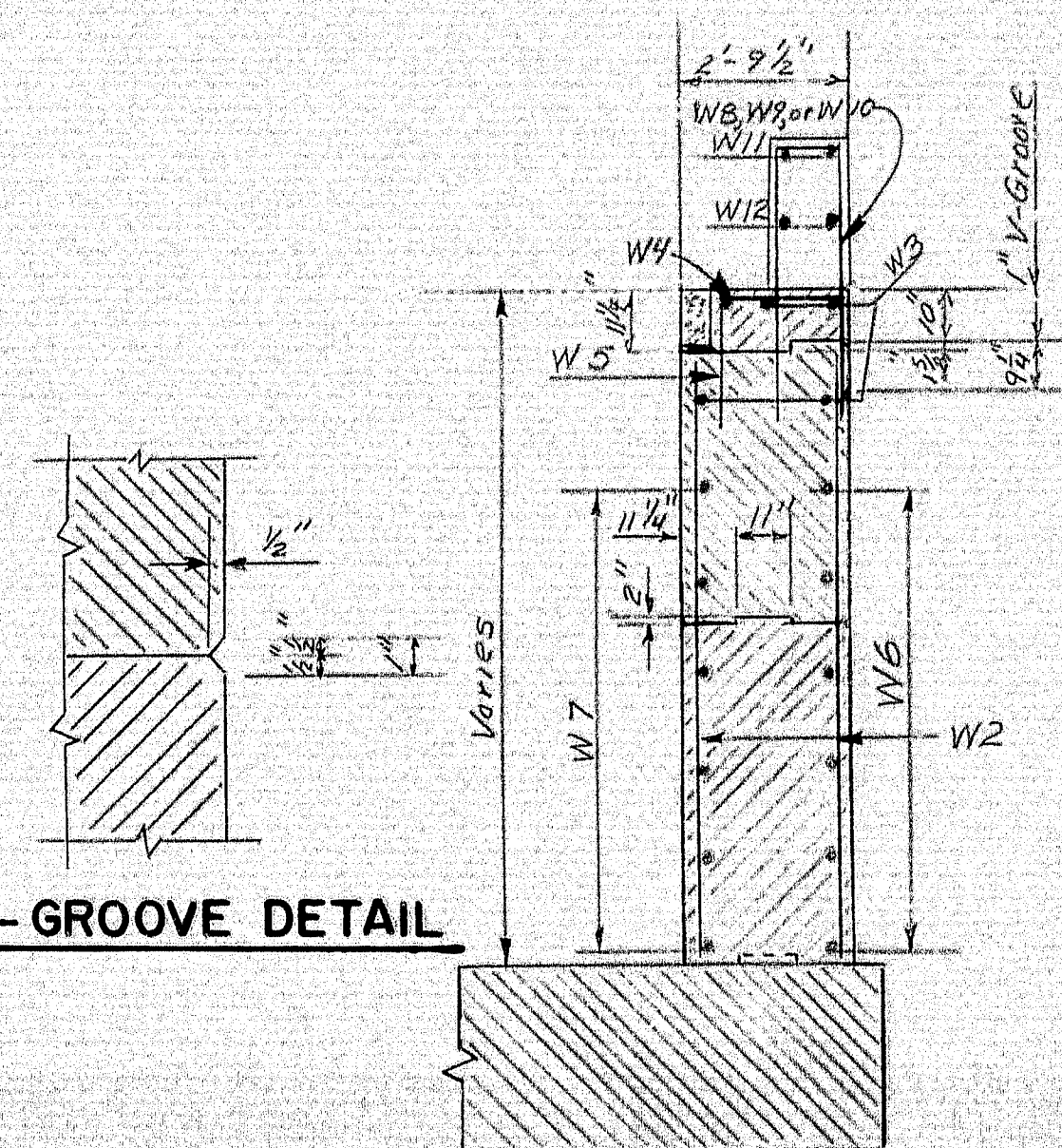
4 LANE REVISION NOVEMBER 1966
EAS VHR

DESIGN - A.H.R.
TRACE - P.J.M.
CHECK - P.J.M.
BRIDGE NO. 101-19
SURVEY PLOT
STATE HIGHWAY COMMISSION
BRIDGE DIVISION
CRYSTAL STATION ROAD BRIDGE
OVER
INTERSTATE 95
IN THE TOWNS OF
CRYSTAL & SHERMAN
AROSTOOK COUNTY
ABUTMENT # 1

SHEET 19 OF 26 AUGUSTA, MAINE JAN 1966

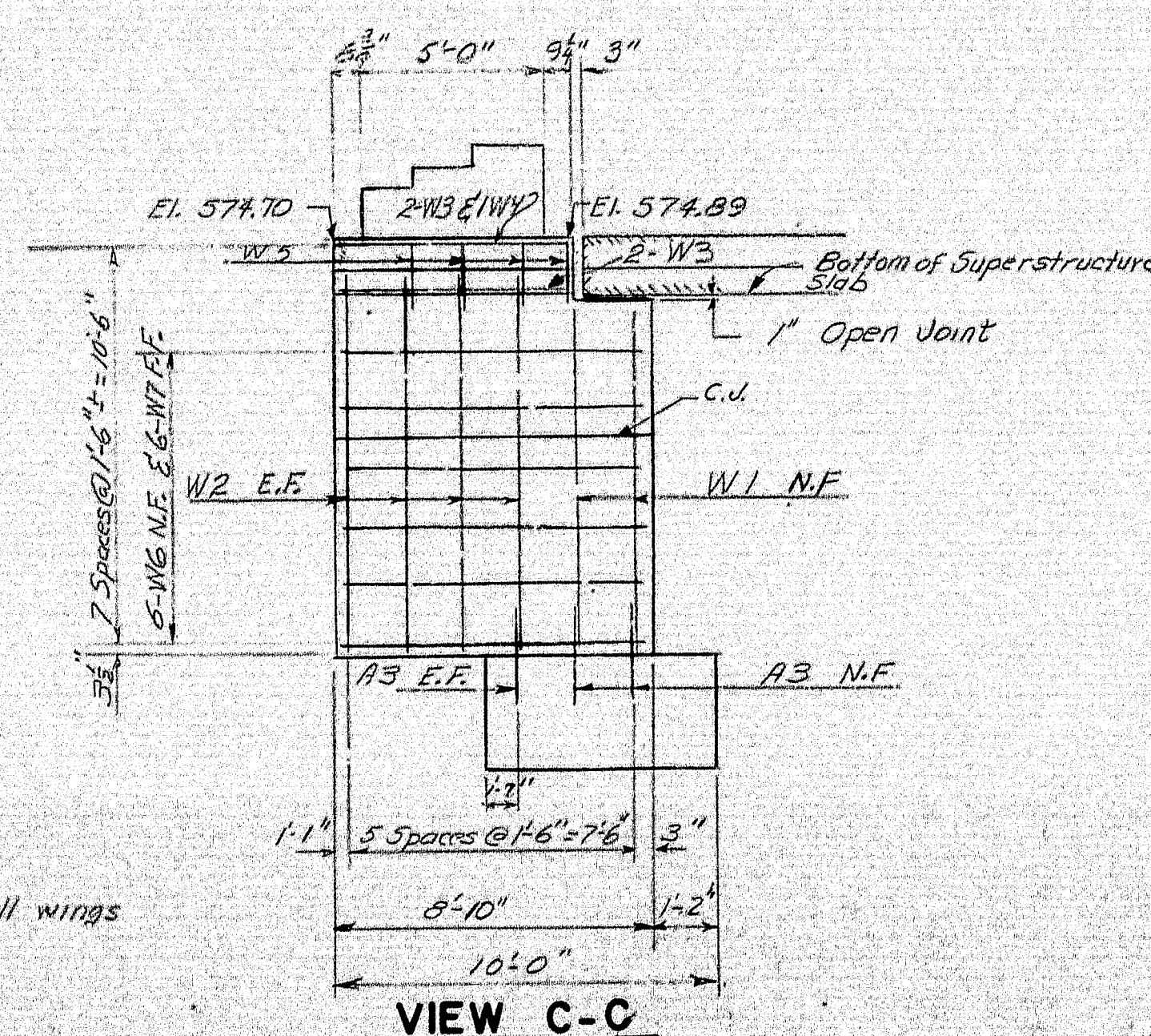
101-19

1" V-GROOVE DETAIL

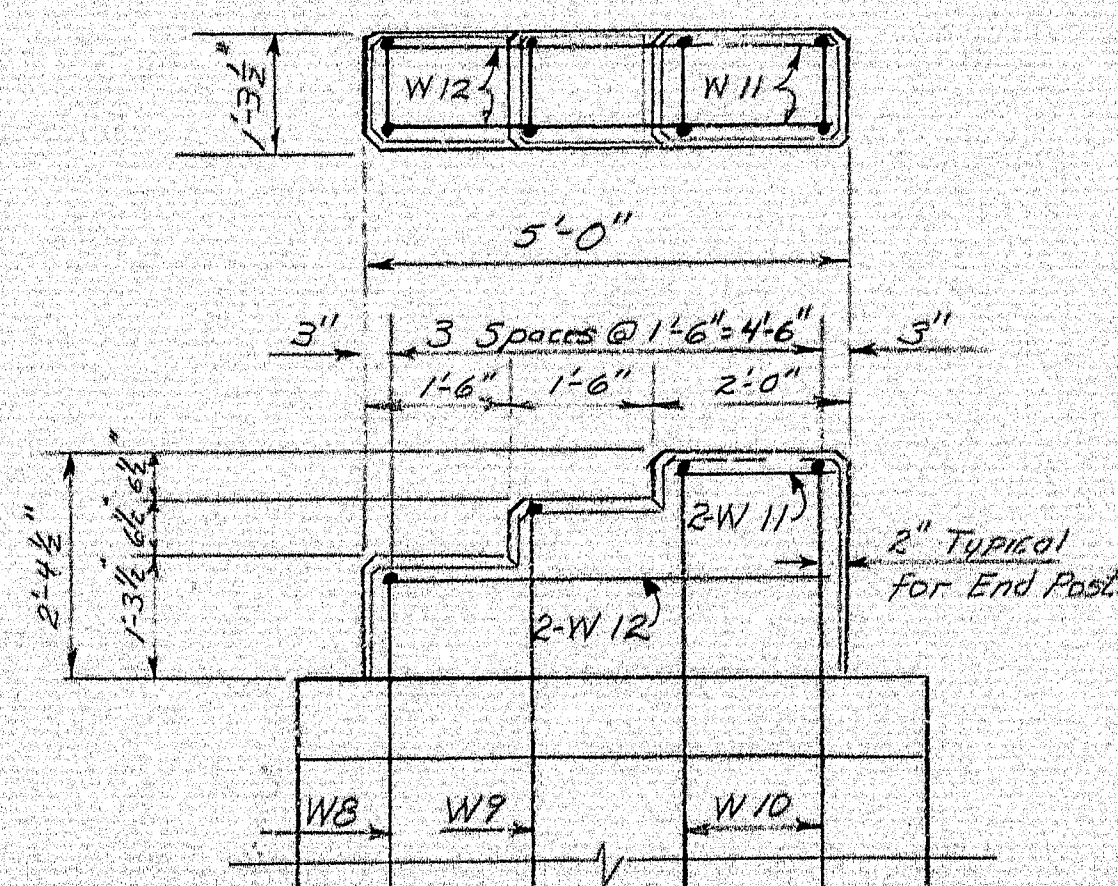


SECTION B-B

Reinforcing Steel typical for all wings

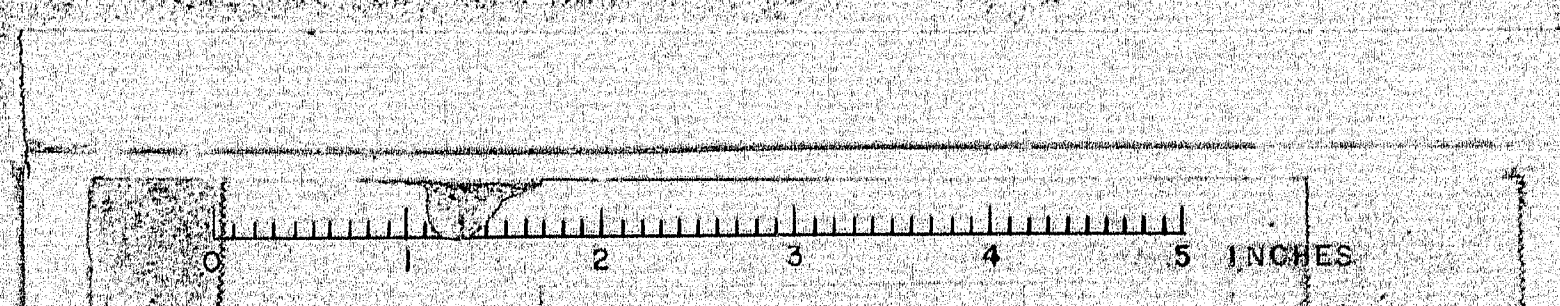


VIEW C-C



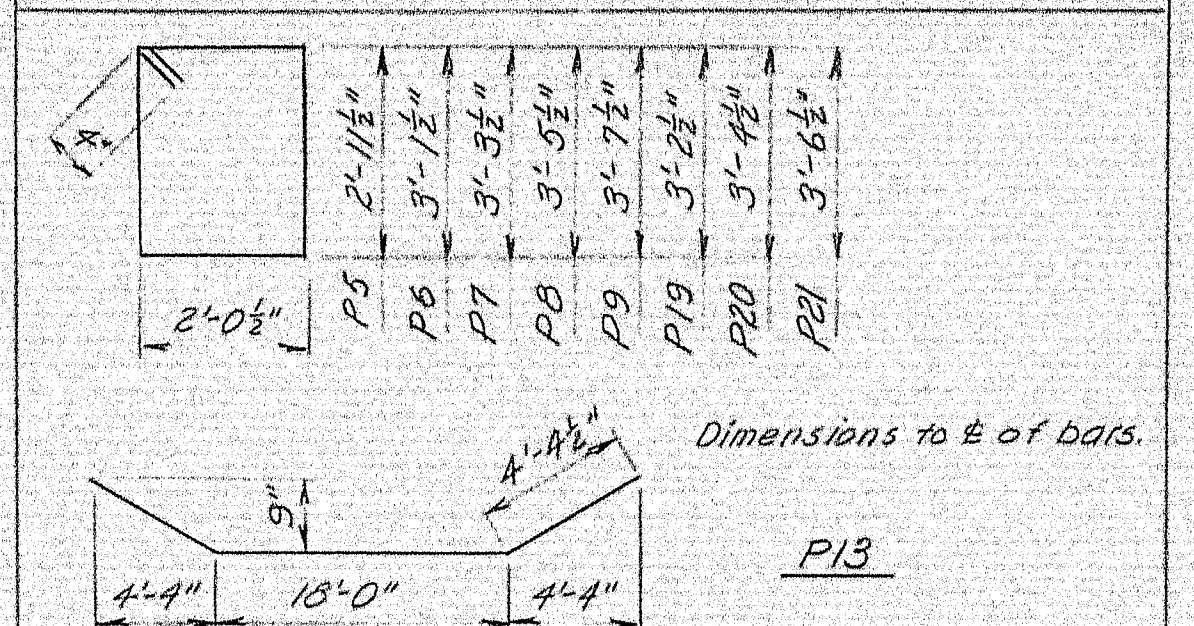
END POST DETAIL

Payment for Concrete in Post to be made under Item 502.21, Structural Concrete, Abutments and Retaining Walls.



BEARING AREA ELEVATIONS			
PIER	LINE 1 & 4	LINE 2 & 3	
#1	570.53	570.69	
#2	571.99	572.15	
#3	573.49	573.65	
#4	573.79	573.95	
#5	573.92	574.08	

ADDITIONAL REINFORCING STEEL (Nov. 17, 1966)



BENT BARS				
MARK	SIZE	NO.	LENGTH	REMARKS
P5	#5	12	10'-8"	Cap
P6			11'-0"	"
P7			11'-4"	"
P8			11'-8"	"
P9		126	12'-0"	"
P19		12	10'-10"	Piers 2, 3, 4 only
P20			11'-6"	ditto
P21			11'-10"	ditto
P13	#8	18	26'-9"	"

STRAIGHT BARS				
MARK	SIZE	NO.	LENGTH	REMARKS
P10	#11	12	26'-8"	Cap
P11	#9	12	26'-8"	"
P12	#6	12	26'-8"	"
X	#8	160	*	*determine length in field.

GENERAL PIER NOTES

- Chamfer all exposed edges 1/2 inch.
- Place reinforcing steel to clear anchor bolts.
- Reinforcing steel to have 2" clearance, except as noted.
- The "Soils Report" notes that water seepage may occur in pier excavations.
- Top of footing elevations may be altered to suit field conditions. No change in the top of footing elevations greater than two feet shall be made without the approval of the Engineer.
- Max. Design Soil Pressure - 4.5 Tons per sq. ft.
- Reinforcing steel for piers, as shown on original construction plans, was delivered prior to Nov. 7, 1966 and will be used in addition to reinforcing steel shown on this sheet.

4 LANE REVISION NOVEMBER 1966
EAS VAF

DESIGN - RAS
TRACE - HY
CHECK - HY

BRIDGE NO. SURVEY -
CLOT -

STATE HIGHWAY COMMISSION
BRIDGE DIVISION

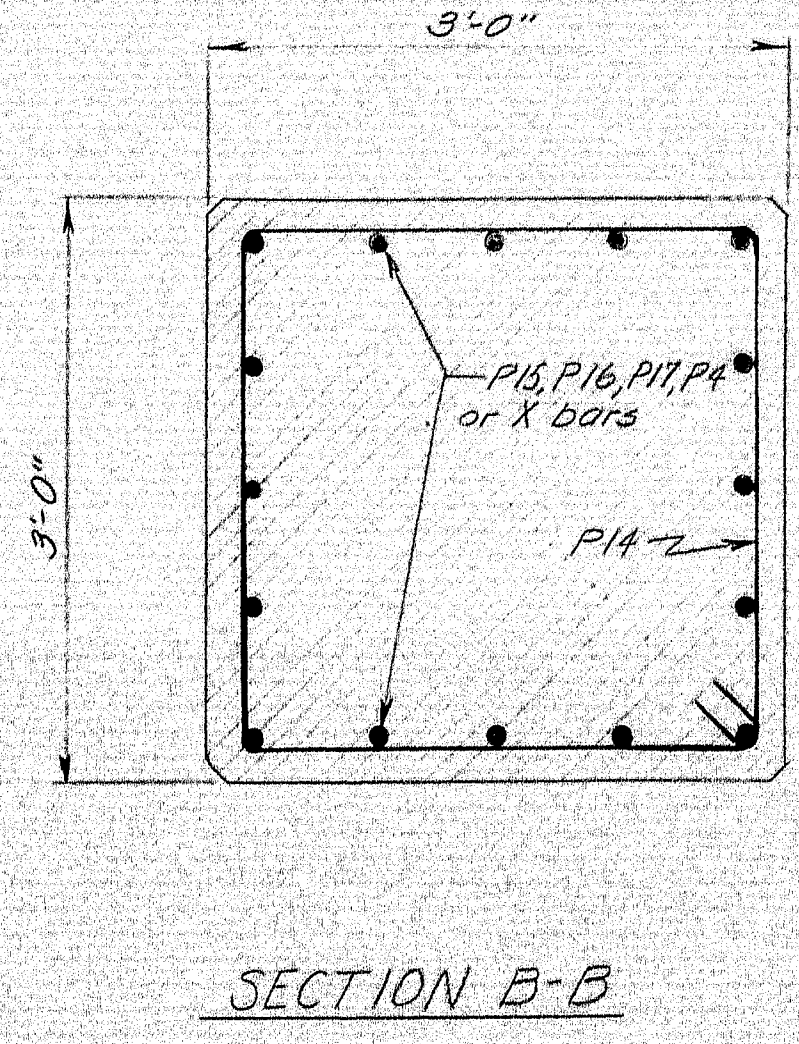
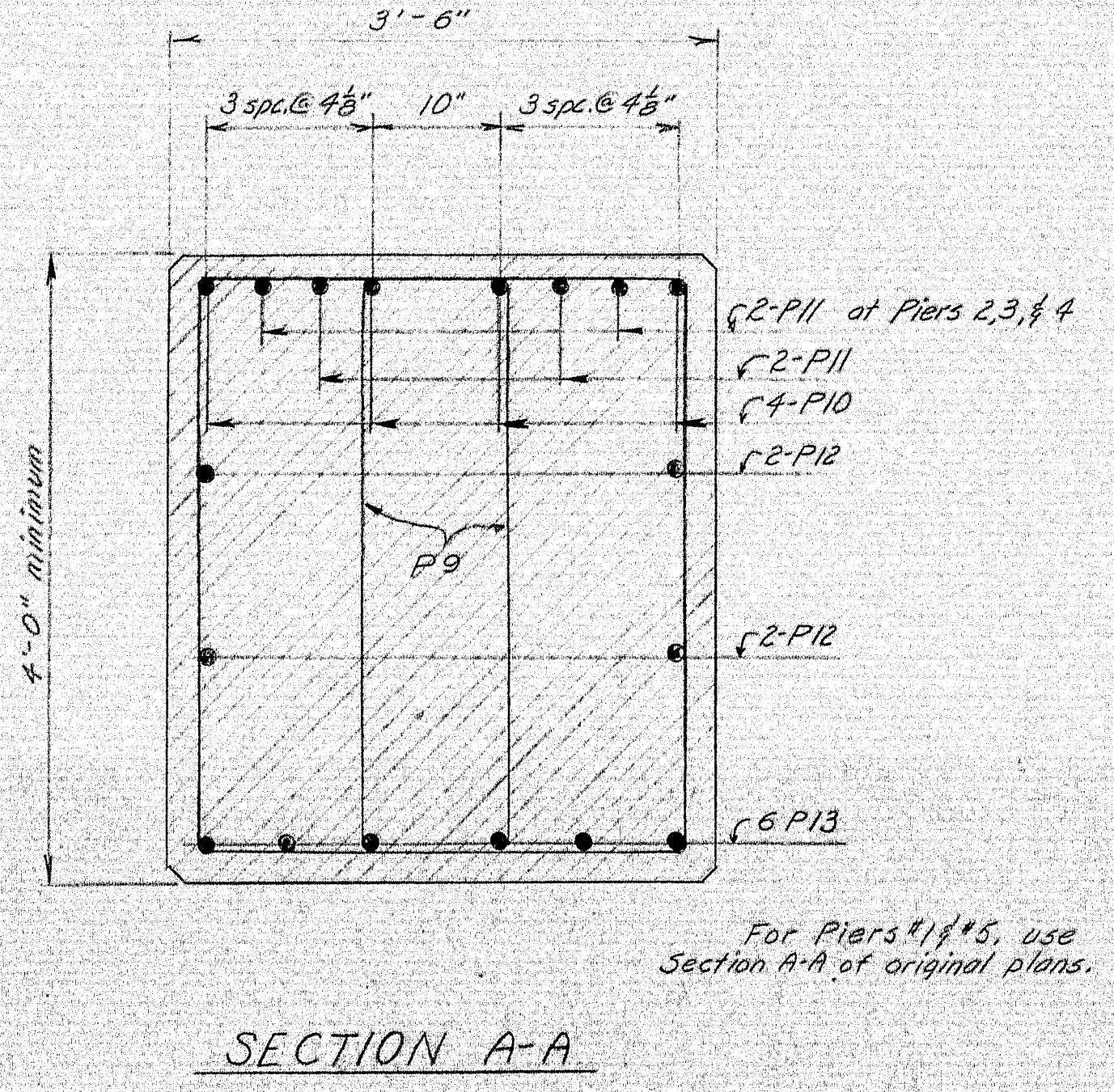
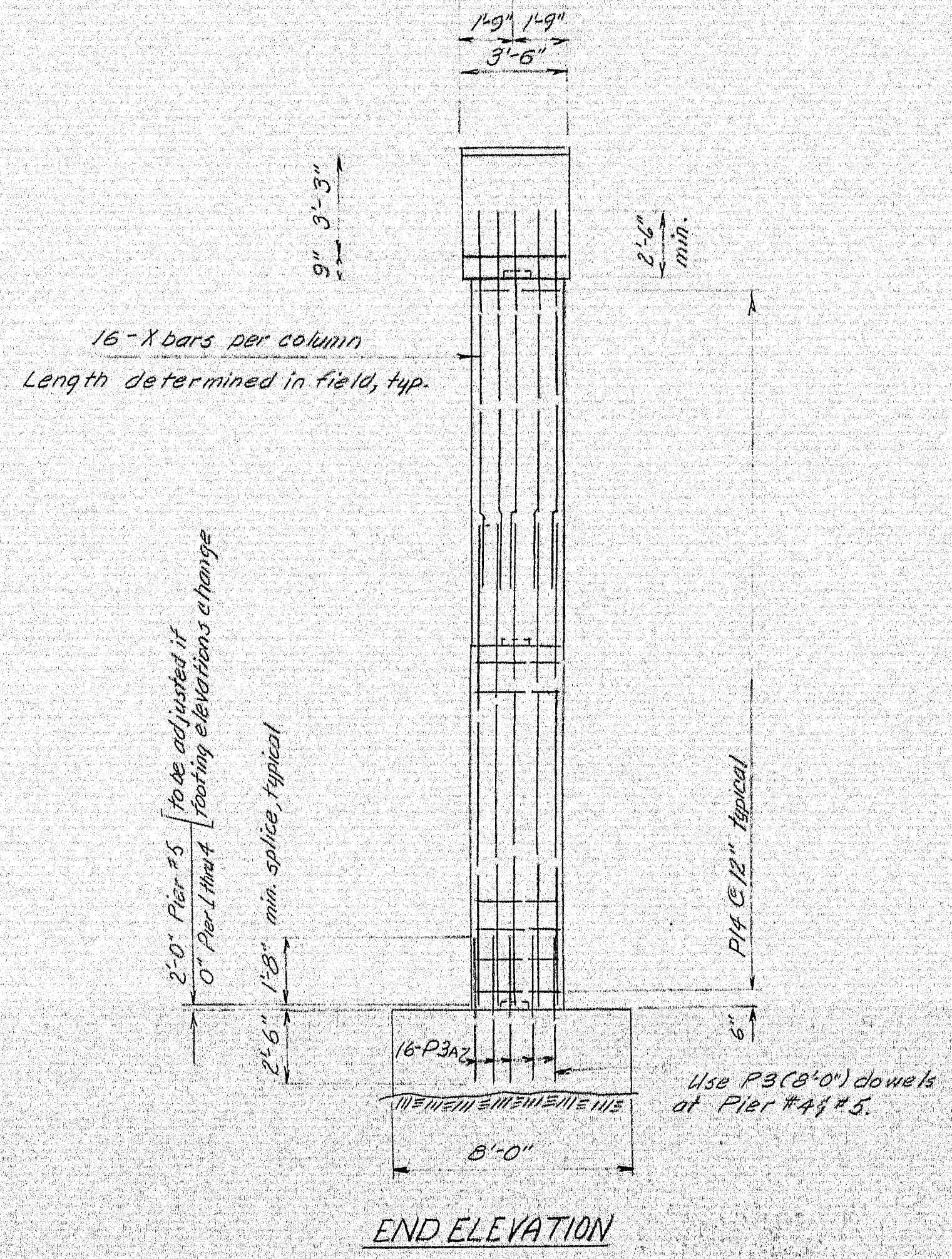
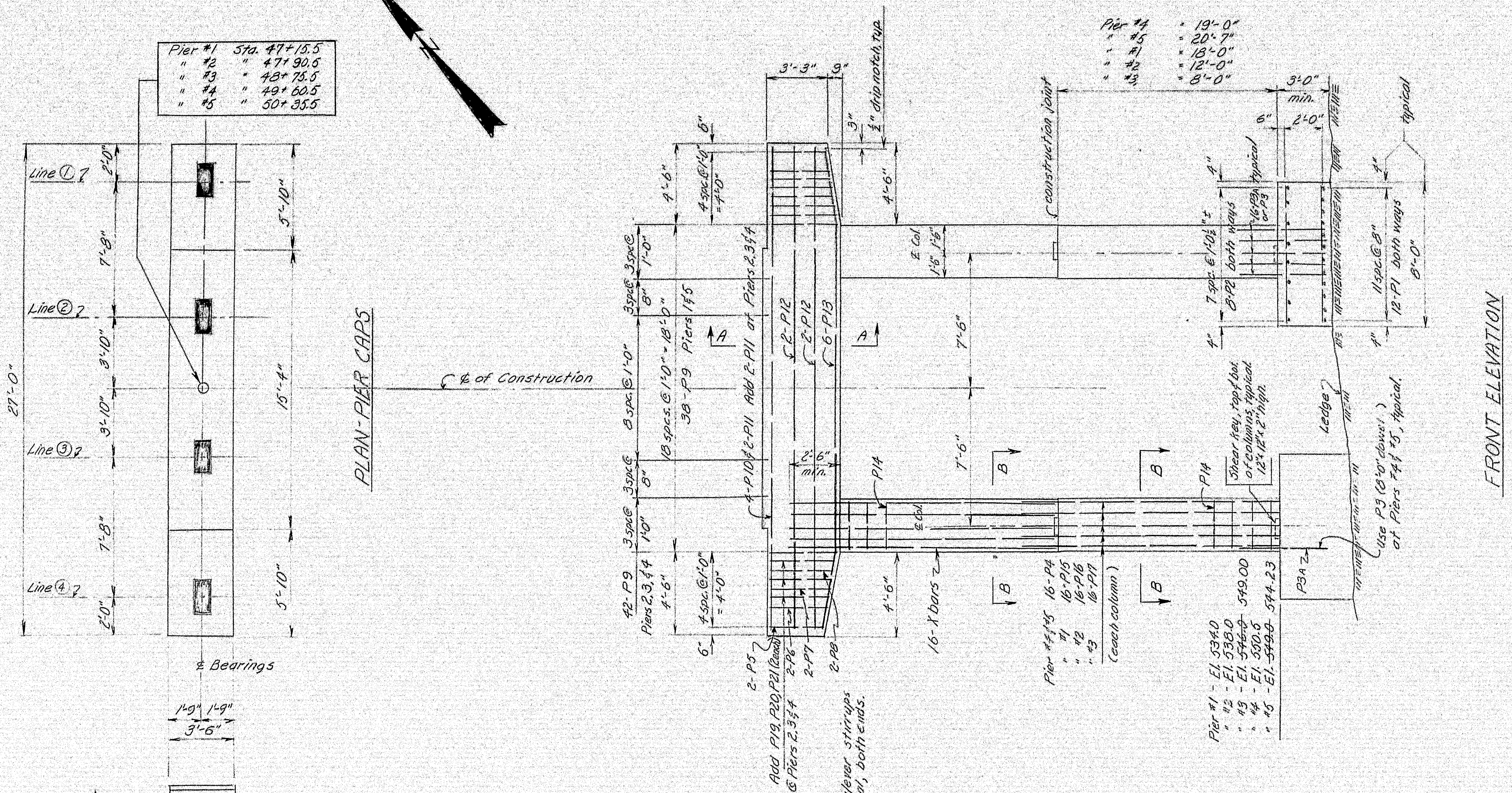
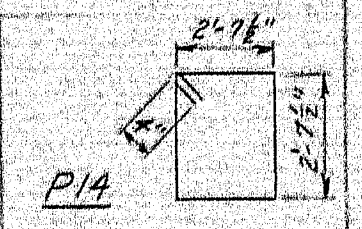
CRYSTAL STATION ROAD BRIDGE
OVER
INTERSTATE 95
IN THE TOWNS OF
CRYSTAL & SHERMAN
ARROOSTOOK COUNTY

PIERS
4 LANE REVISION
SHEET 21A OF 26 AUGUSTA, MAINE NOV 1966

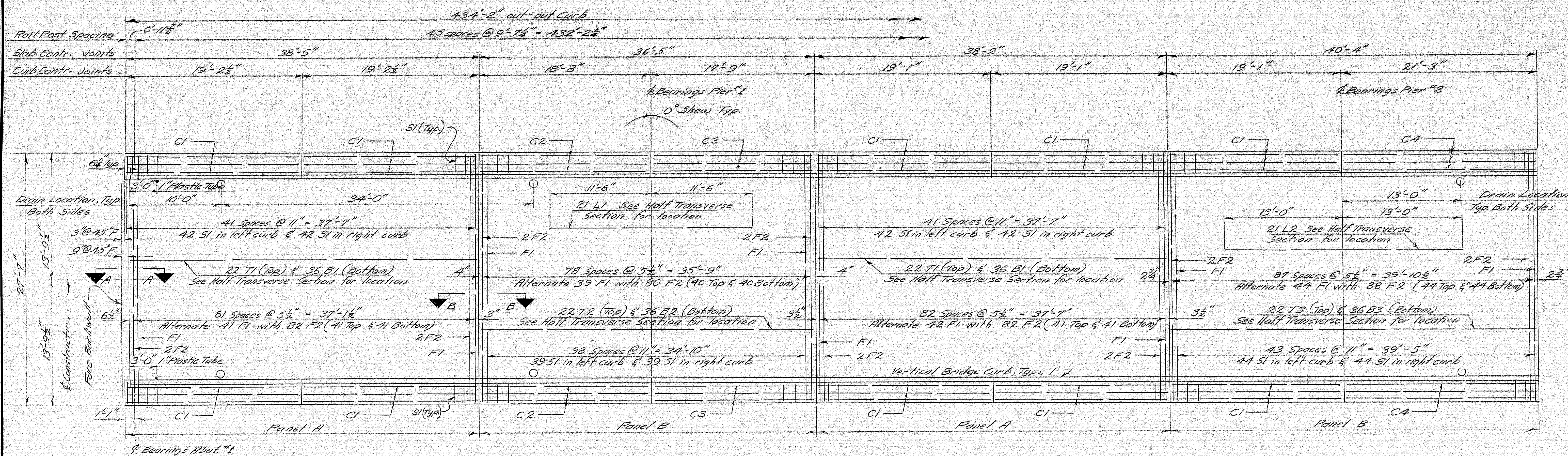
ADDITIONAL REINFORCING STEEL (Nov. 7, 1966)				
MARK	SIZE	NO.	LENGTH	REMARKS
P1	#6	144	7'-6"	Footings
P2	#5	96	7'-6"	"
P3A	#8	96	5'-0"	"
P15	#8	32	22'-0"	Columns, Pier #1
P16	#8	32	16'-0"	" " #2
P17	#8	32	12'-0"	" " #3

BENT BAR				
MARK	SIZE	NO.	LENGTH	REMARKS
P14	#4	175	11'-2"	Columns

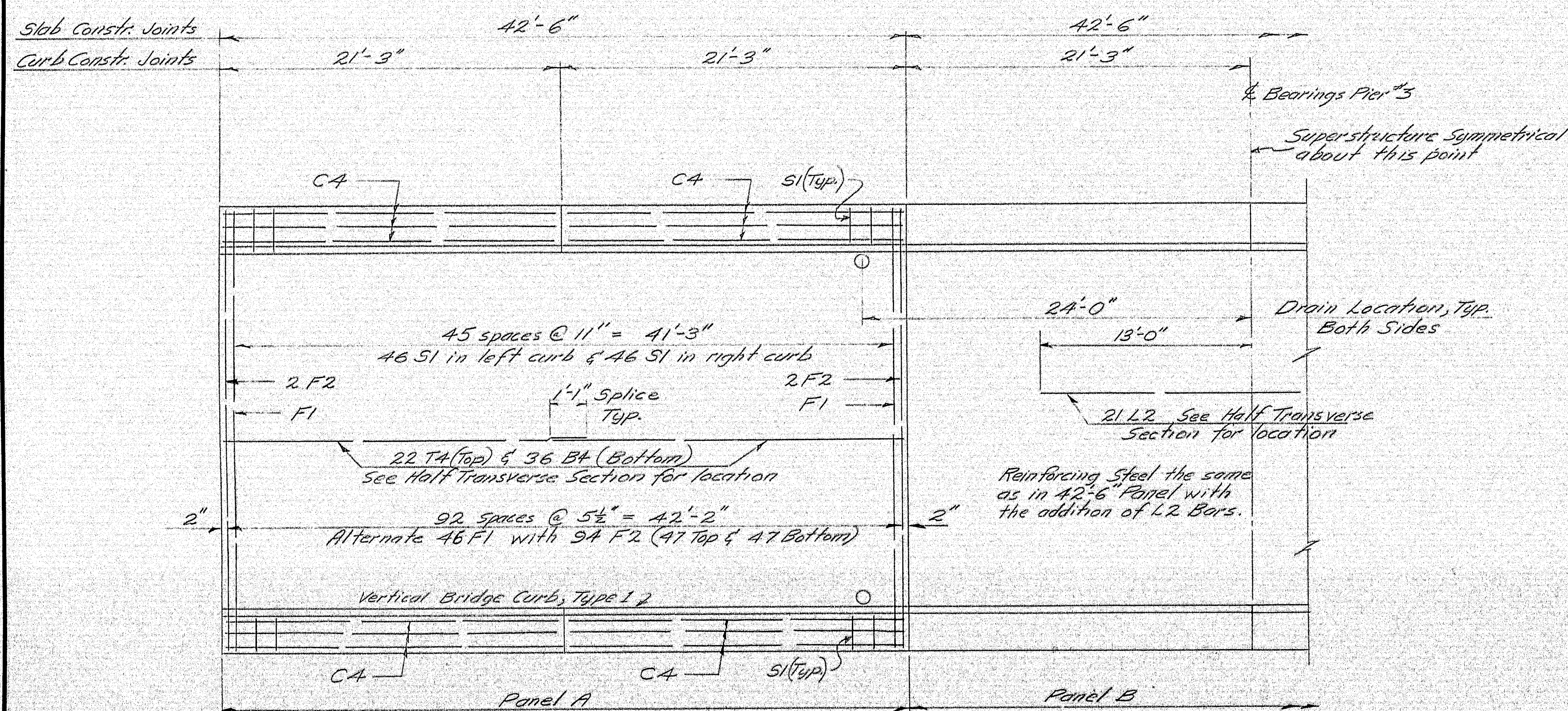
* Includes quantity to complete columns.
Dimensions to E of bar.



B. P. R. REG. NO.	STATE	PROJECT NUMBER	SHEET NO.	TOTAL SHEET
1	MAINE	I-95-9(41)	24A	26



PLAN
All dimensions are horizontal



PLAN
All dimensions are horizontal

GENERAL NOTES

1. Chamfer all exposed edges of concrete $\frac{1}{2}$ "
2. At curb contraction joints over piers provide $\frac{1}{4}$ " bituminous treated preformed expansion joint filler to separate curb sections (cover granite and concrete). At all other curb contraction joints break bond between the concrete surfaces by applying an asphalt point of suitable grade.
3. Form a 1" V-Groove on outside face of curb and slab at each curb contraction joint.
4. Drain details are shown on Standard Details, Sheet BD-104-64 16 Drains are required.
5. Rail details are shown on Standard Details, Sheets BD-108-65 and BD-109-66, and sheet 25A.
6. Placement Sequence: Panels A to be placed before Panels B
7. Sections A-A & B-B are located on sheet 25A.

4 LANE REVISION NOVEMBER 1966
R.W.L. K.A.P.

DESIGN- TRACE- CHECK-	BRIDGE NO. SURVEY- PLOT-
-----------------------------	--------------------------------

STATE HIGHWAY COMMISSION
BRIDGE DIVISION

CRYSTAL STATION ROAD BRIDGE
OVER

INTERSTATE 95

CRYSTAL & SHERMAN

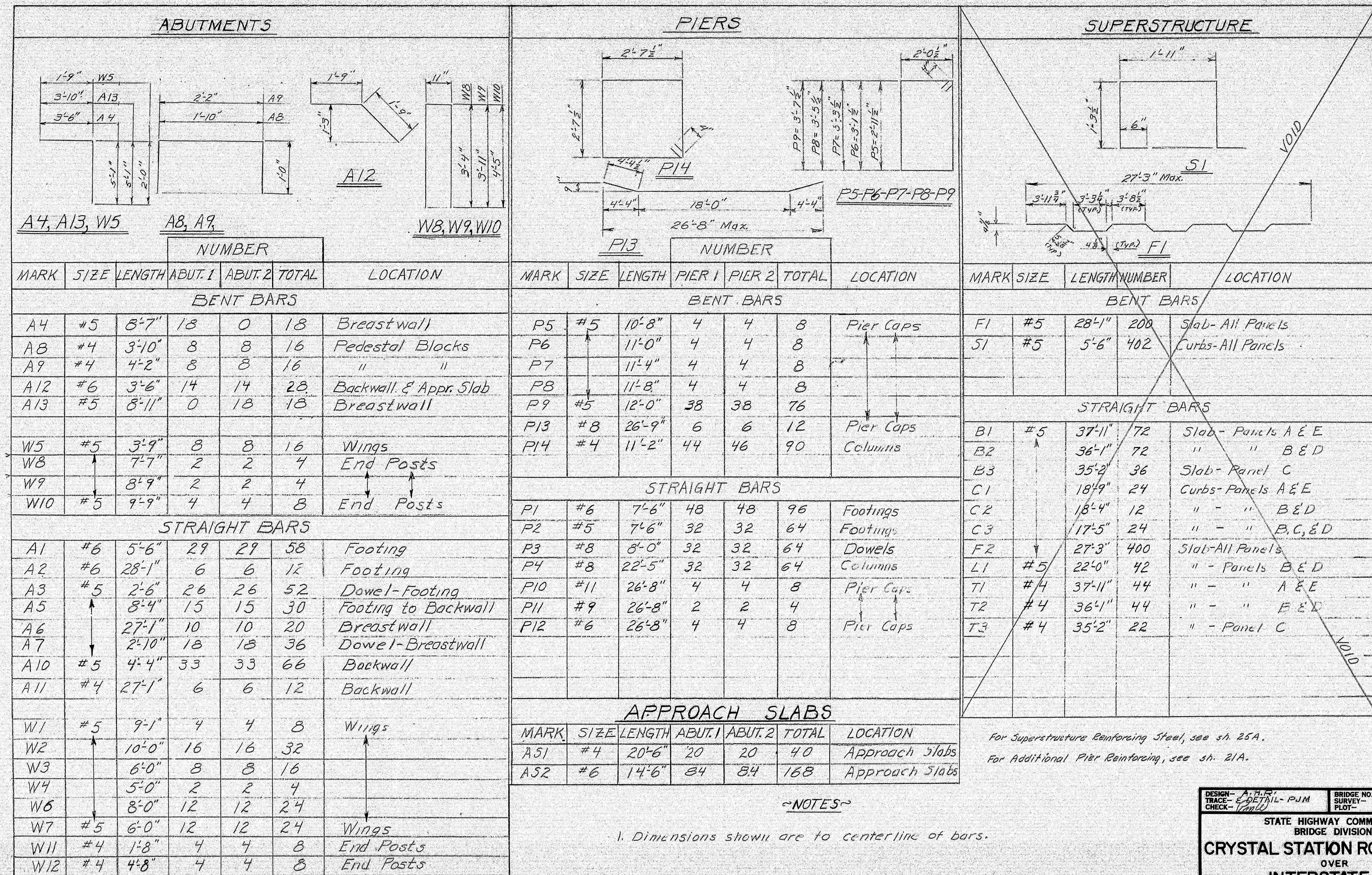
AROOSTOOK COUNTY

SHEET 24A OF 26 AUGUSTA, MAINE

101-24

101-24 Sts. Rd. - Long Island Sound area

101-24 Sta. Rd. - Long Island Sound



4 LANE REVISION NOVEMBER 1966
BAS VAP

DESIGN- A.P.P. TRACE- E.D.T.H.- P.J.M. CHECK- J.M.D.	BRIDGE NO. SURVEY- PLOT-
STATE HIGHWAY COMMISSION BRIDGE DIVISION	
CRYSTAL STATION ROAD BRIDGE	
OVER	
INTERSTATE 95	
IN THE TOWNS OF	
CRYSTAL & SHERMAN	
AROOSTOOK COUNTY	
REINFORCING STEEL	
SHEET 26 OF 26	AUGUSTA, MAINE JAN 1966

101-26 LANE REVISION

